

! WARNINGS:

AVOID EYE INJURY - Do not stare directly into beam or point it directly into anyone's face. Doing so for more than a few seconds could cause retinal damage. Not recommended for use by children under fourteen years of age. Any battery may leak harmful chemicals which may damage skin, clothing or the inside of the flashlight. **TO AVOID RISK OF INJURY, DO NOT LET ANY MATERIAL LEAKED FROM A BATTERY COME IN CONTACT WITH EYES OR SKIN.** Any battery may rupture or explode if put in a fire or otherwise exposed to excessive heat. **TO AVOID RISK OF INJURY, DO NOT EXPOSE BATTERIES TO EXCESSIVE HEAT.** To reduce the risk of personal injury or harm to your flashlight, take the following precautions: • Use only 18650 lithium batteries from a reputable manufacturer. • Do not use different brands of batteries in the same flashlight. • When replacing batteries, always replace the whole set. • Do not use rechargeable or reusable alkaline batteries. • Do not try to recharge batteries that are not specifically designed to be recharged. • Warning: batteries must be inserted correctly. Failure to do so could cause permanent damage to the LED module. • Follow battery manufacturer's instructions as to proper handling, storage and disposal of batteries. • Carefully follow the steps listed under **INSPECTION AND MAINTENANCE**.

LIMITED SIX MONTH WARRANTY: Natural Brands, LLC. (Natural Brands) warrants to the original owner that this flashlight is free from defects in parts and workmanship for six months from the date of purchase. (Natural Brands does not warrant the future availability of any particular colors, markings or decorations, and reserves the option to replace items with comparable parts at its discretion). Proof of purchase must be provided in order to establish the original purchase date and price. Warranty applies to original purchaser only and is not transferrable. Products purchased from unauthorized retailers are not covered by warranty.

Registration is not required for warranty coverage. This warranty is in lieu of all other warranties and conditions, express or implied.

EXCLUSIONS: This warranty does not cover any of the following: Damage to or failure of the flashlight or any component thereof due to disassembly, alteration, misuse, battery leakage or lack of maintenance. Natural Brands disclaims any responsibility for incidental or consequential damages. Some jurisdictions (countries, provinces, and states) do not allow exclusion or limitation of implied warranties, incidental or consequential damages and/or limitations on transferability, so the above limitations and exclusions may not apply to you.

HOW AND WHEN TO MAKE A WARRANTY CLAIM:
If the problem remains unresolved after following the TROUBLESHOOTING guide enclosed, see the Customer Service section at www.solarayproducts.com

USER MANUAL

PRO ZX-2XL Professional Series Deluxe Flashlight Kit



USER MANUAL

PRO ZX-2XL Professional Series Deluxe Flashlight Kit



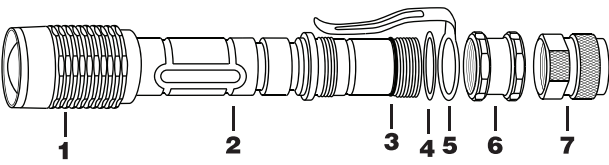


Fig. 1

1. Head Assembly*
2. Barrel Assembly
3. Lip Seal/O-Ring
4. Belt Clip Stopper
5. Belt Clip
6. Belt Clip Fastener
7. Tailcap/Switch Assembly*

*Do not disassemble or modify the Head Assembly or Tailcap

Quick Start Guide

- 1 **Remove the Tailcap** by turning counter clockwise (Fig. 1, #7).
- 2 **Insert (2) 18650 Batteries into flashlight** (with “+” end first) and reattach the Tailcap.
- 3 **Test the flashlight** by depressing the Switch Button located on the end of the Tailcap.

Note: The 18650 lithium-ion batteries need to be fully charged (approx. 3-4 hours) before using. See CHARGER OPERATION

5 Modes of Operation: To switch between modes of operation, **partially depress** the Tailcap Switch Button.

Modes Include:

High Beam / Medium Beam / Low Beam / Disrupter Signal Strobe / SOS Rescue Signal

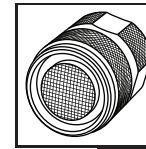


Fig. 3

Memory Mode Operation: 1) Select desired light mode. 2) Leave in selected mode for 6 seconds or longer. 3) Turn flashlight off for 6 seconds or longer. 4) Flashlight retains memory mode set when turned back on.

Zoom Feature: Turn flashlight on. Hold the barrel of the flashlight while pulling the head (zoom) back and forth to operate the zoom focus.

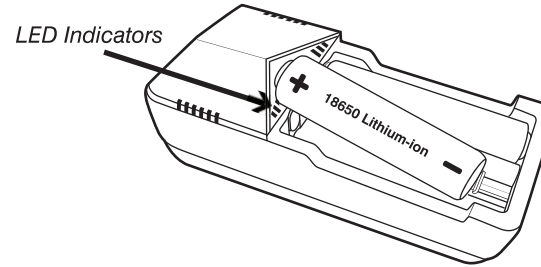


Fig. 4

CHARGER OPERATION: Insert battery/batteries into the charger slots. One or two batteries may be charged at a time. The battery positive (+) end should be facing towards the LED indicators (Fig. 4). Attach the power cord to the charger and plug into a wall outlet. Incorrectly inserting the batteries will prevent the batteries from being charged. Blue light indicators will blink while charging batteries. When batteries are fully charged, all 3 lights will remain solid blue and stop blinking (typically 3-4 hours for a 3000mAh capacity battery). Never leave charging batteries unattended.

Charging Indicator Lights

- Lights blink independently to indicate proper charging and charging level
- Displays 3 solid lights when charging is complete
- Displays 3 solid blinking lights to indicate batteries are not inserted correctly

! WARNING:

Never Charge Batteries Unattended

When charging lithium-ion batteries you should always remain in constant observation to monitor the charging process and react to potential problems that may occur.

BATTERY FEATURES: Solaray premium 18650 lithium-ion batteries offer an integrated PCB protection (Anti-Overcharge, Anti-Overdischarge, Anti-Short Circuit). This internal PCB protection helps to prevent voltage too high or too low which may damage the batteries and charger. Nominal Capacity Max: 3000mAh, Cycle life: Batteries can be recharged up to 500 times.

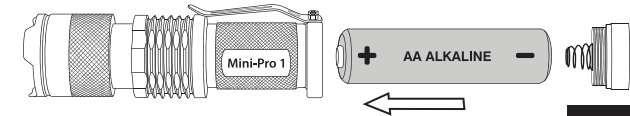


Fig. 5

MINI FLASHLIGHT (Mini-Pro 1): Offers 300 lumens of light, 7 watts of power, and an adjustable zoom. The flashlight accepts a AA alkaline or lithium 14500 battery (battery not included).

Battery Installation: Insert one battery by inserting the “+” end into flashlight first as shown (Fig. 5). Replace tailcap by turning clockwise.

Power Operation: To turn the flashlight on/off, fully depress the Tailcap Switch Button.

3 Modes of Operation: To switch between modes of operation, partially depress the Tailcap Switch Button. Modes include High, Low, and Disrupter Signal Strobe.

INSPECTION AND MAINTENANCE: For prolonged life and efficiency, it is necessary periodically to inspect and perform preventative maintenance on your flashlight as follows:

1. Inspection - Any battery may leak caustic solutions or gases which can corrode the inside of your flashlight. You should remove the batteries at least once a month and visually inspect the inside of the flashlight for signs of corrosion.

2. Separate Storage of Batteries - If your flashlight is used infrequently, e.g., once a month or less, it is recommended to remove the batteries and store them separately. This helps guard against corrosion and may also prolong battery life.

3. Maintenance - Place a small amount of petroleum jelly on all threads and rubber lip seals every six months. If your flashlight is exposed to moisture, or water, lubricant should be applied more frequently.

TROUBLESHOOTING: If you're experiencing a problem, please follow these troubleshooting steps.

1. Flashlight will not turn on. - Test with two fully charged 18650 lithium-ion batteries (see CHARGER OPERATION). If they are exhausted, weak, or damaged, replace them with new Solaray premium 18650 lithium-ion batteries.

2. Flashlight still will not turn, or will not stay, on. - If replacing the batteries does not solve the problem, check the tailcap. The metal surfaces contacting the barrel, tailcap and battery terminals should be shiny metal without obstruction between them. Any corrosion or dirt should be carefully removed.

3. If all of the above steps have been followed and the flashlight still does not perform properly, follow the steps in the How and When to Make a Warranty Claim section, or see the Customer Service section at www.solarayproducts.com

! WARNING:

Read and understand all instructions. Failure to follow all instructions listed, can result in electrical shock, fire and/or serious personal injury.

SAVE THESE INSTRUCTIONS

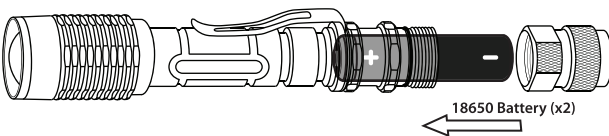


Fig. 2

FLASHLIGHT OPERATION: Insert two lithium-ion 18650 batteries by inserting the “+” end into flashlight first as shown (Fig. 2). Replace tailcap by turning clockwise. **Overtightening the Tailcap** can damage the O-Ring.

Note: Spare O-Ring is provided in packaging which must be stretched to fit.

Power Operation: To turn the flashlight on/off, **fully depress** the **Tailcap Switch Button** (Fig. 3).